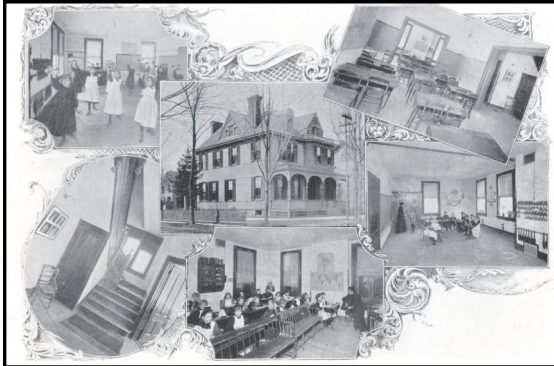
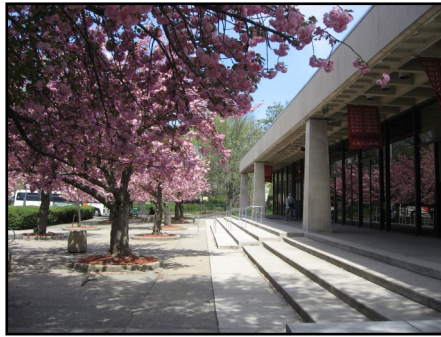


# You and Local History



## Perfect Together!



Visit the  
Local History Room  
of the  
Plainfield Public Library NJ

800 Park Avenue  
Plainfield NJ 07060  
908-757-1111 ext. 136

E-mail: [localhistory@plfdpl.info](mailto:localhistory@plfdpl.info)

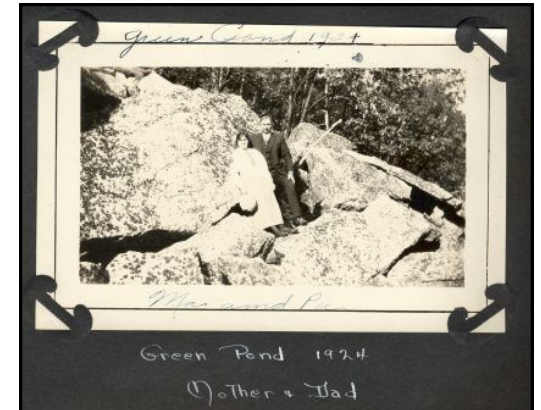
Website: [www.plfdpl.info](http://www.plfdpl.info)

Mary Ellen Rogan  
Library Director

Sarah Hull, Archivist  
Head of Local History

Jane Thoner  
Genealogy Librarian

# BURIED TREASURES



## Assuring the Future Of Your

Photographs

Documents

Books

Souvenirs

Memorabilia

Consider making them available for  
research at the  
Plainfield Public Library

## What Issues Should I Consider?



- ◆ Do my items have historical & research value?
- ◆ Do I own the item outright or have I made a prior commitment to family members?
- ◆ If my treasures have monetary value, should I sell them?
- ◆ Have I sorted through my collections for extraneous photographs, letters, etc.?
- ◆ Have I allowed myself enough time to review my collections and decide what to keep and what to donate?
- ◆ Will I be able to bring the items to the library for review or will I need a librarian to visit my home?
- ◆ Am I able to make a monetary donation to help cover the expense of archival supplies and processing?

## What Types of Items Are Important?

- ◆ **Photographs** – Family photos documenting milestones and personal memories, such as weddings, graduations, birthdays and the like.
- ◆ **Scrapbooks** – Albums that highlight family reunions, celebrations, and other occasions.
- ◆ **Correspondence** – Handwritten or typed personal letters, postcards, and telegrams.
- ◆ **Personal Documents** – Local diplomas, birth certificates, deeds, wills, etc.
- ◆ **Bible Records** – Family records of births, deaths, and marriages.
- ◆ **Diaries & Journals** – Personal and family histories that shed light on a person's life or local events.
- ◆ **Books** – Yearbooks, class directories, published genealogies, etc.
- ◆ **Other** – Artifacts, ephemera, and other memorabilia.

## Choosing the Right Repository

- ◆ Should I donate my items to
  - ◆ My local library?
  - ◆ The historical society?
  - ◆ A museum?
  - ◆ A statewide agency?
- ◆ Do my items pertain to Plainfield or to another locale?
- ◆ Will the library give me a statement of value for my taxes? Will I need to get a private appraisal?
- ◆ How will the agency store, display and/or make my donated items accessible?
- ◆ May I alter the donor agreement and place restrictions on my gift?

*Our Library staff welcomes the opportunity to talk with you about your collections.*